

Technical Tour : Half day tour

JAMSTEC; Japan Agency for Marine-Earth Science and Technology

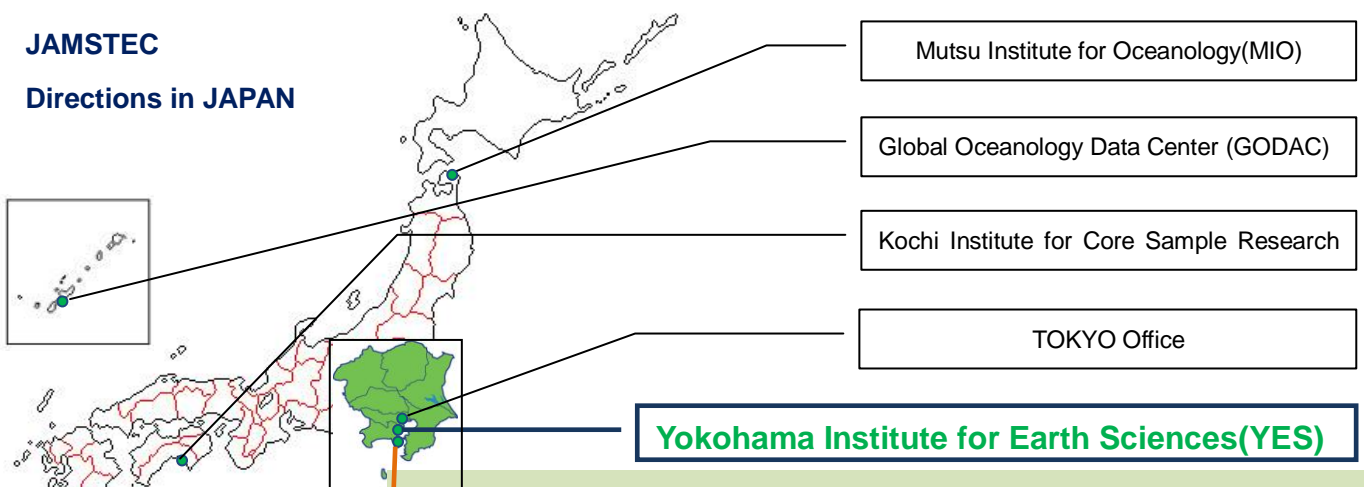
Morning Tour (AM): Yokohama Institute for Earth Sciences

Afternoon Tour (PM): Yokohama Institute for Earth Sciences and Yokosuka Headquarters

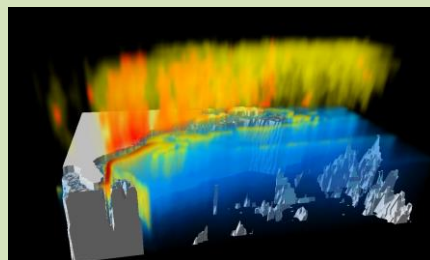
JAMSTEC has the main objective to contribute to the advancement of academic research in addition to the improvement of marine science and technology by proceeding the fundamental research and development on marine, and the cooperative activities on the academic research related to the Ocean for the benefit of the peace and human welfare.

JAMSTEC

Directions in JAPAN



Yokohama Institute for Earth Sciences has been conducting the process (modeling) research on global changes and research on the dynamics of the Earth's interior by best utilizing the supercomputer, "[The Earth Simulator](#)", one of the top-performance computers in the world.



Yokohama Institute for Earth Sciences: 3173-25, Showa-machi, Kanazawa-ku, Yokohama-shi, 236-0001 JAPAN

Yokosuka Headquarters

Yokosuka Headquarters has been promoting the Marine Science and Technology to understand the Earth and Ocean systems. At the Exhibition Hall, there are several models of JAMSTEC research vessels and a full-scale model of manned submersible SHINKAI 6500, as well as live specimens of deep-sea creatures, etc.



Yokosuka Headquarters: 2-15, Natsushima-cho, Yokosuka-shi, Kanagawa, 237-0061 JAPAN